

Brightness Adjustment

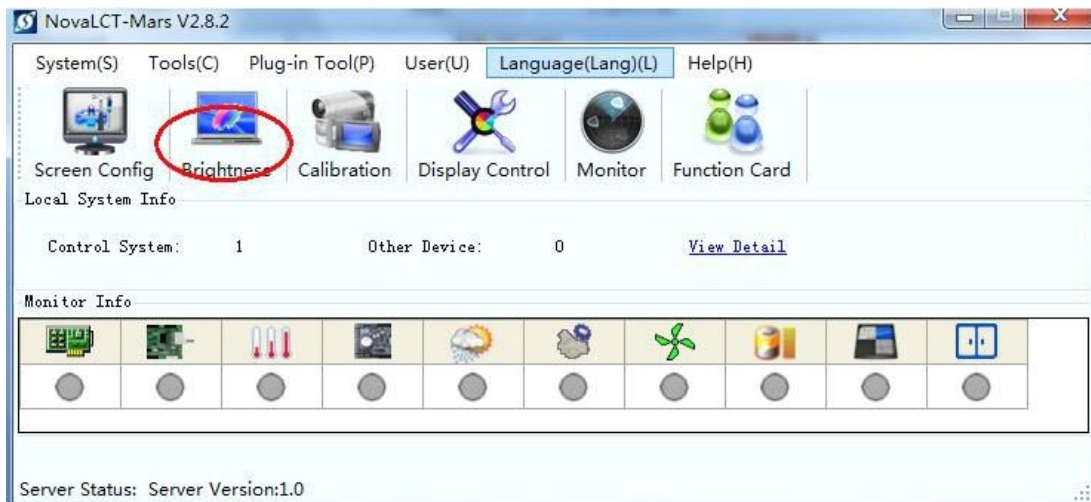
1. Run NovaLCT-Mars



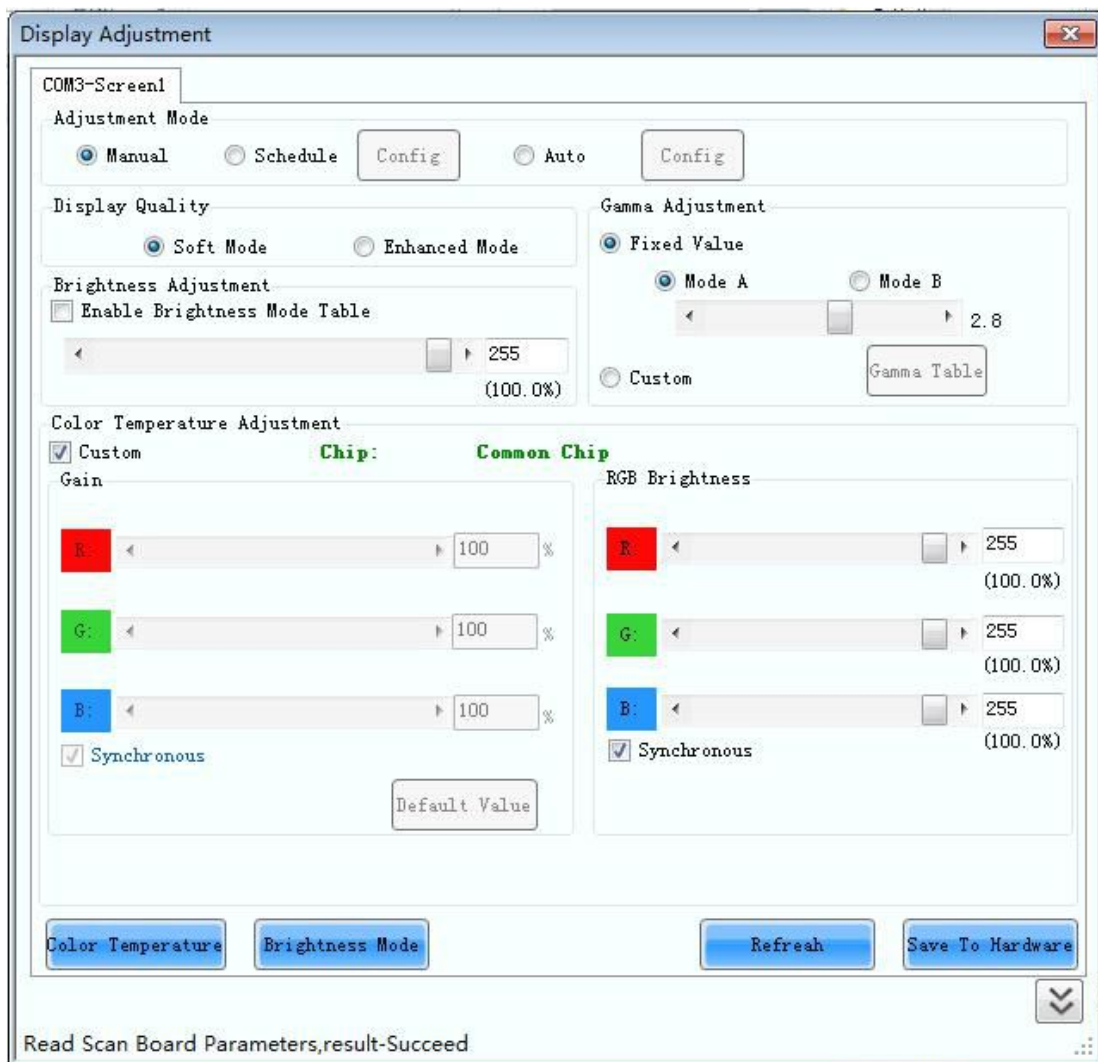
2. Login as **Advanced User**



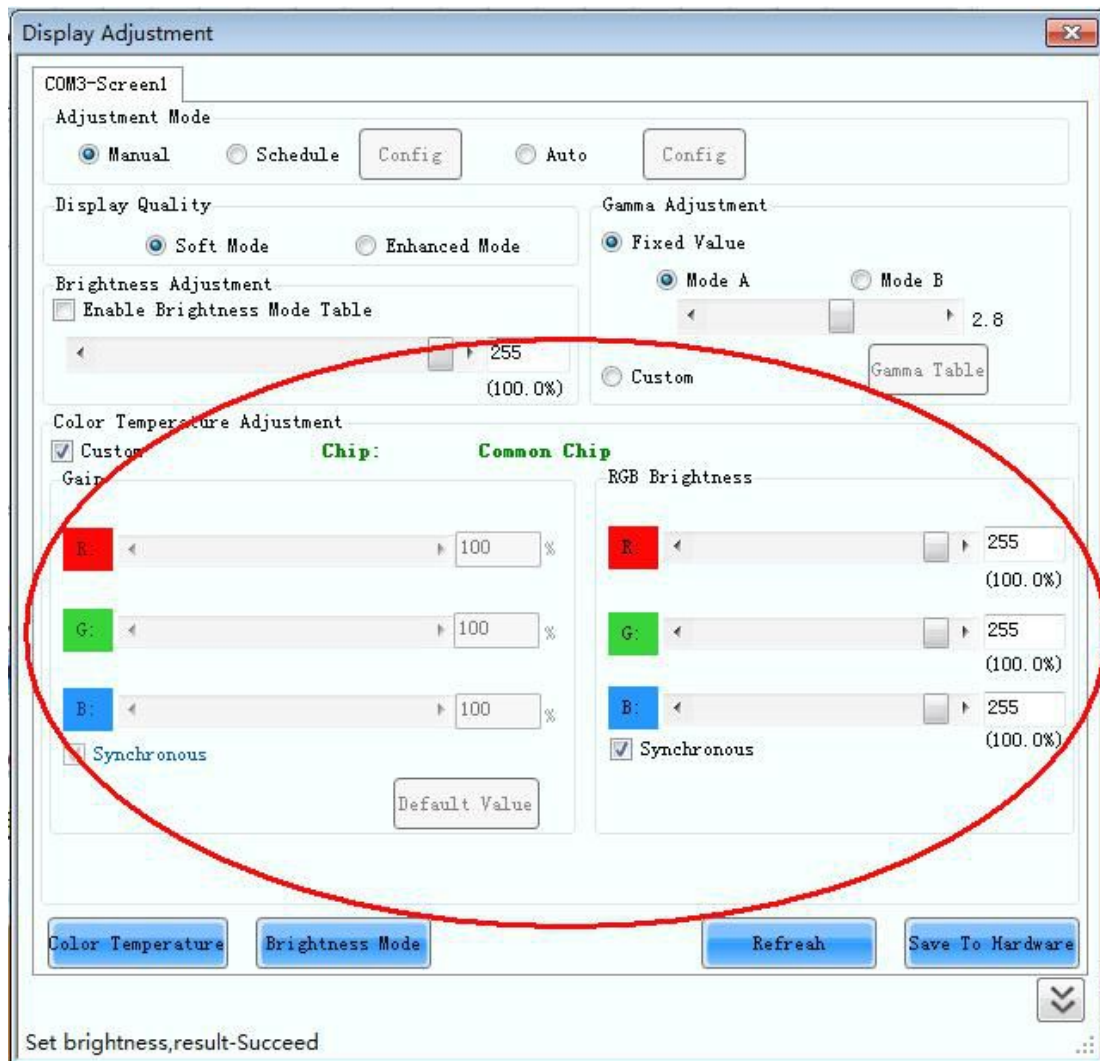
3. Press **Brightness** Icon



4. Choose brightness **Adjustment Mode: Manual, Schedule, or Auto**



A. Manual brightness adjustment



Display Quality

There are two modes for display quality, **Soft Mode** and **Enhanced Mode**.

Mode. Use soft mode for the situation that the environment brightness is not very high, usually for indoor display. Enhanced mode is better when the background is very bright, usually for outdoor display.

Gamma Adjustment

Gray scale level starts earlier in Mode A than Mode B.

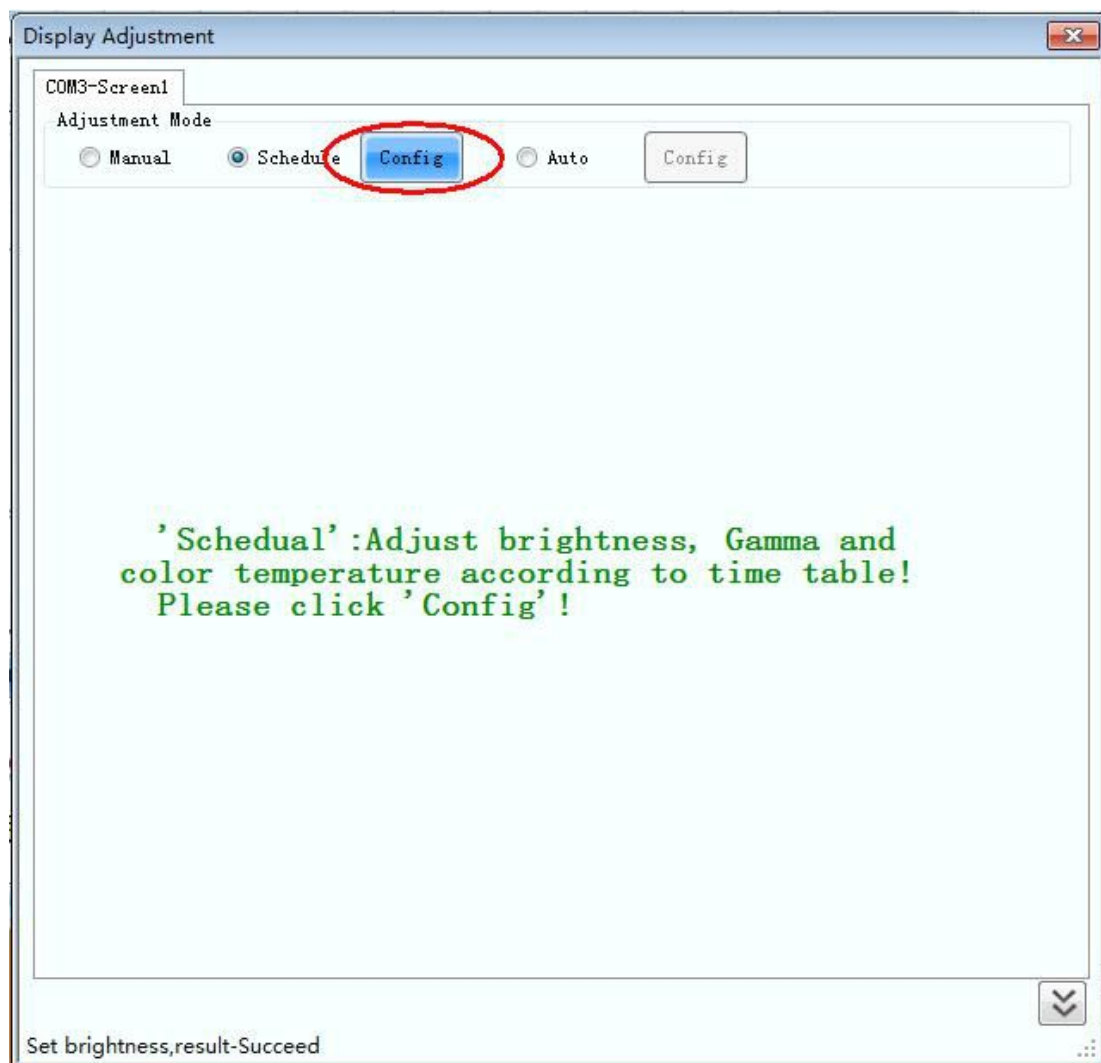
Gain

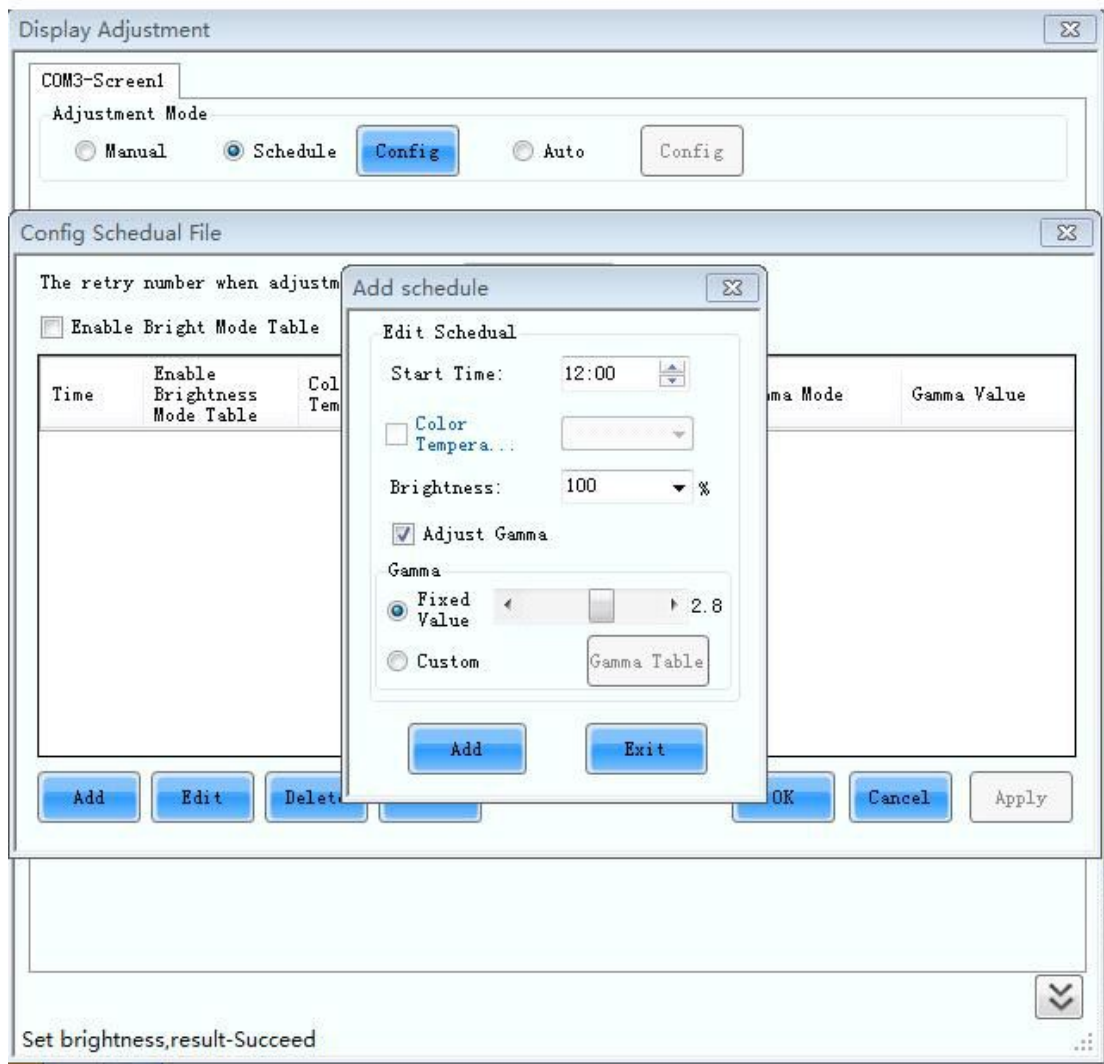
For drive IC with current gain function, adjusting gain will increase drive IC's current output.

RGB brightness

Adjust R/G/B brightness respectively.

B. Schedule brightness adjustment





Start time

Define specific brightness, Gama effective time.

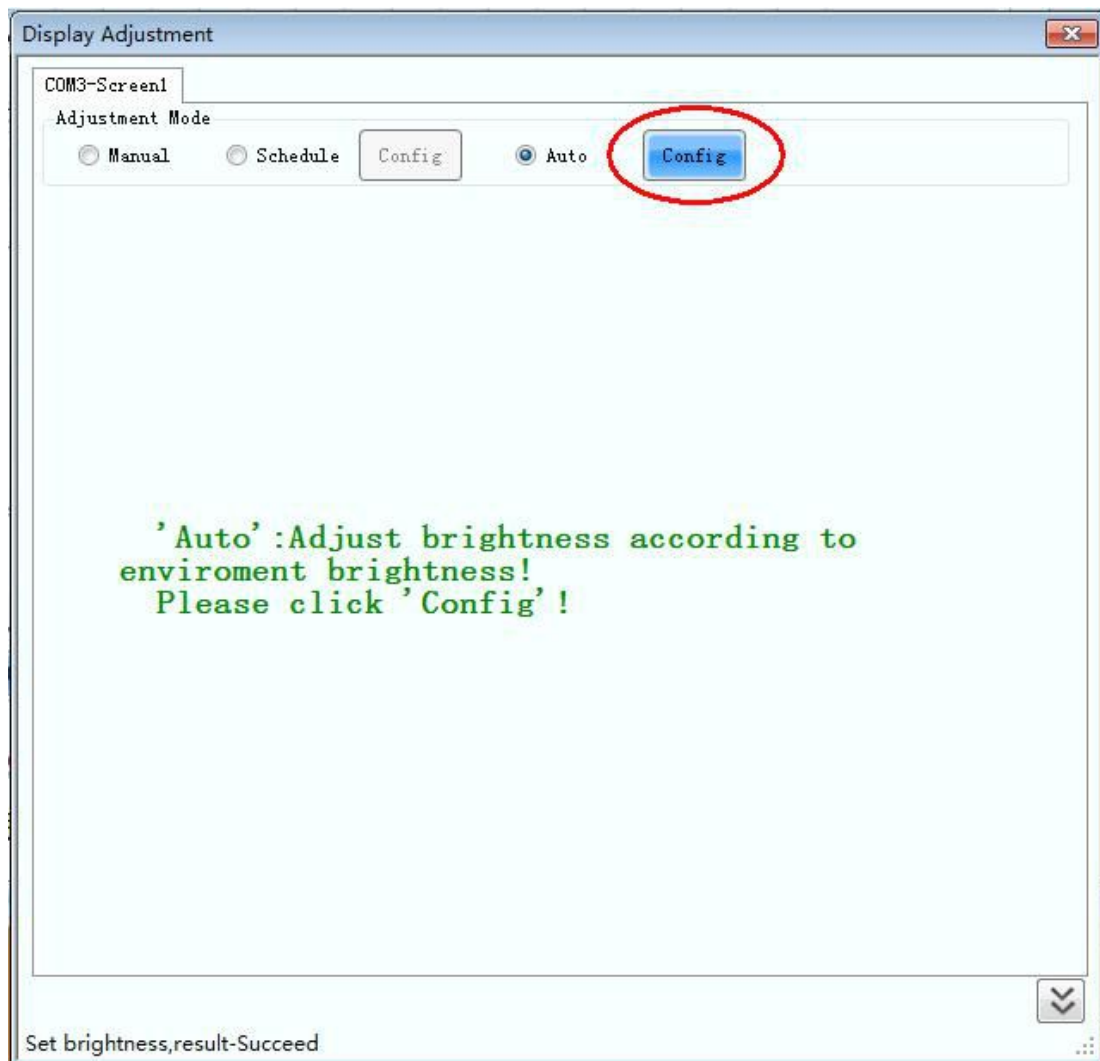
Brightness


Define screen brightness

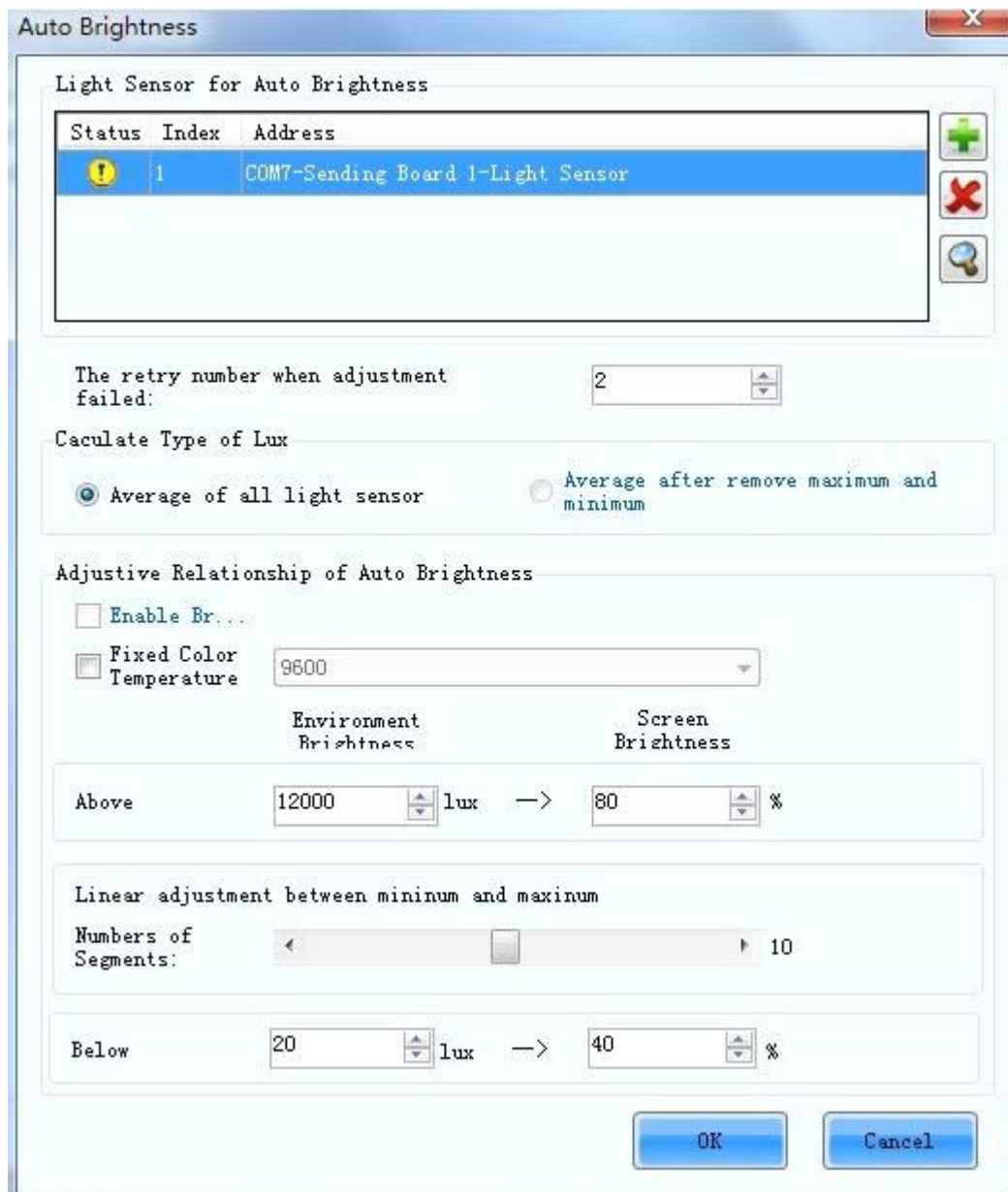
Gama: There are two options, **Fixed Value** or **Custom**


C. Auto brightness adjustment

Select **Auto**, press **Config** button



Press  to search and add Light Sensor, set environment brightness and screen brightness according to installation application.



After successfully add Light Sensor, press  to read environment brightness:

